

COMEN



Ingenious and minimalistic, smart and lightweight

NC5 Vital Signs Monitor

# NC5 Vital Signs Monitor

Applied to outpatient, emergency and general wards. As a spot check monitor and bed side monitor, it integrates NIBP, SpO<sub>2</sub>, ECG, Ear Temp. It is simple, tasteful, compact and lightweight, a perfect combination of technology and aesthetics.

Practical dual mode, switch smoothly



## Spot Check Mode:

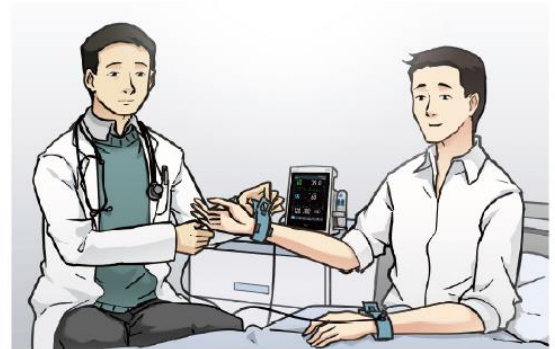
Applied to the outpatient and emergency wards for quick measurement of physiological parameters. The modified early warning score (MEWS) system can be used as a reference for patient diagnosis and disposition, making it simple and effective.



## Monitoring Mode:

Used as a bedside monitor in general wards to monitor the patient's physiological parameters (blood pressure, blood oxygen, ECG, etc.) in real time.

## Quick-ECG Measurement System



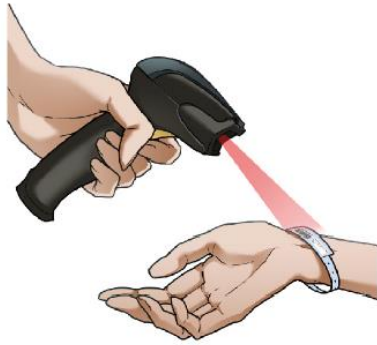
It is a special design for clinical requirements.  
Quick-ECG measurement with special accessories  
simplifies the operation



Oversized and eye-catching NIBP button. Quickly measure  
blood pressure with a single click of the button.

Non-contact infrared ear thermometer.  
No risk of cross-infection. Fast, stable and  
accuracy with measuring time in **1-2s**.





Barcode Scanner brings you quickly patient information input, support various barcode scanners helping purchase in locally.



Refined clinical decision-aiding function. Help identify potentially critical patients with multiple scoring system.



Manual standby with a single press of the On/Off button for easily operation.

A premium experience that you need



- **8-inch capacitive** touchscreen with ultra-narrow bezel design, high-sensitivity touch brings you highly responsive operation experience, demonstrating vital signs with ultra-high definition and contrast

- 360° visible double light alarms with intelligent alarm function, making it convenient for medical personnel to monitor patients



- 50mm width thermal recorder for option
- Support 25mm/s, 50mm/s printing speed
- Support 3 channel waveform printing

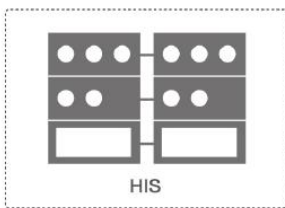


- Support nurse call function

- Open to a variety of mounting solutions, both wall mount and movable trolleys for option



## Information Management System



HL7



NC5



wifi



wired



STAR8800 Central Monitoring System

- Support HL7 protocol, which can be seamlessly connected with hospital information system to realize information interconnection
- The central monitoring system can be connected via wired/wireless mode to achieve centralized patient management, and thus streamline the workload of medical staff. Provide a comprehensive networking solution that allows you to access patient information and improve work efficiency anytime and anywhere

| Name | Inventor Time       | Parent ID | Doc No. | Birth Date | Sex |
|------|---------------------|-----------|---------|------------|-----|
| [+]  | 2018-06-18 14:27:11 |           |         |            | M   |
| [+]  | 2018-06-18 14:27:11 |           |         |            | M   |
| [+]  | 2018-06-18 14:27:11 |           |         |            | M   |
| [+]  | 2018-06-18 14:27:11 |           |         |            | M   |
| [+]  | 2018-06-18 14:27:11 |           |         |            | M   |
| [+]  | 2018-06-18 14:27:11 |           |         |            | M   |
| [+]  | 2018-06-18 14:27:11 |           |         |            | M   |
| [+]  | 2018-06-18 14:27:11 |           |         |            | M   |
| [+]  | 2018-06-18 14:27:11 |           |         |            | M   |
| [+]  | 2018-06-18 14:27:11 |           |         |            | M   |

- Patient Management System: All-encompassing patient information management system where users can query, review, delete and transfer medical records



- Alarm management system: Alarms settings of all the parameters are integrated on one menu, and the alarm thresholds of all parameters can be set jointly, simplifying the work of medical personnel